

# Empathy Mapping: Getting Started with the Next Tool You'll Love

Christina J. Inge  
Founder, Thoughtlight



Christina J. Inge

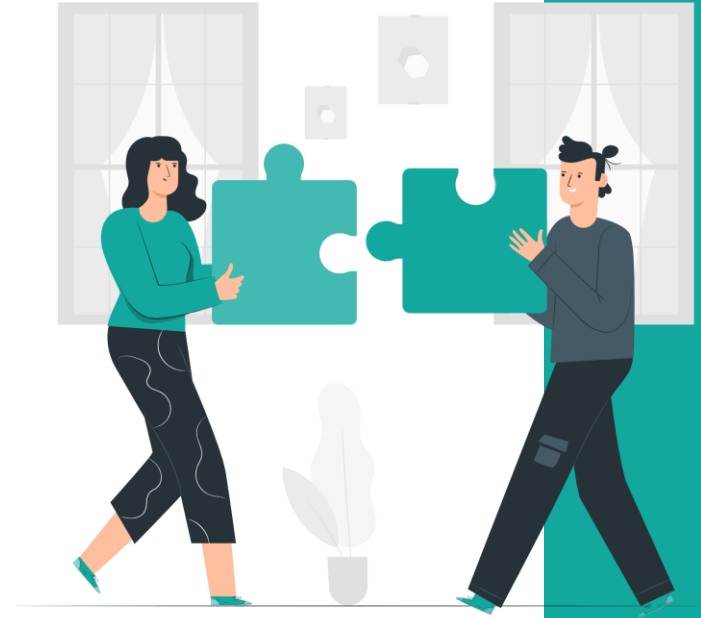


Everything you need to know  
[u10.me/pco](http://u10.me/pco)

## 2021 Sponsors



“Empathy is our ability to see the world through other people's eyes, to see what they see, feel what they feel, and experience things as they do.” – Dam and Siang, Interaction Design Foundation



Christina J. Inge

# Empathy-driven research is not MR



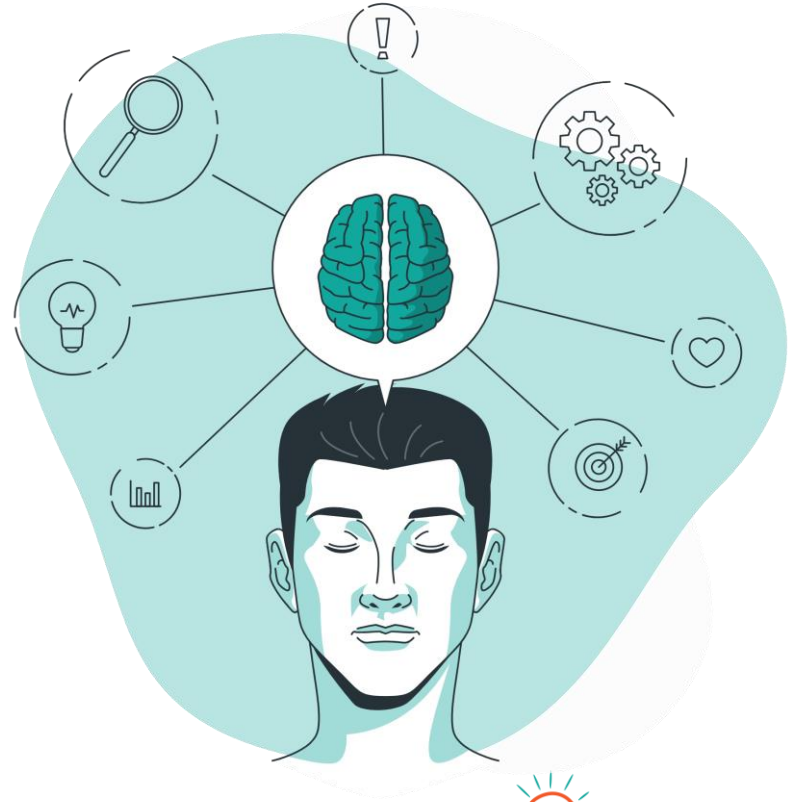
**Feelings:** how the user feels about the product and using the product



**Facts:** who the user is, what their financial or practical relationship is to the company

# Investing in the Empathy Phase

- Empathize stage of Design Thinking represents a major investment of time
- May be the longest phase



The background features abstract, organic shapes in orange and teal colors, framing a central white area where the text is located.

# Effective Empathy Maps

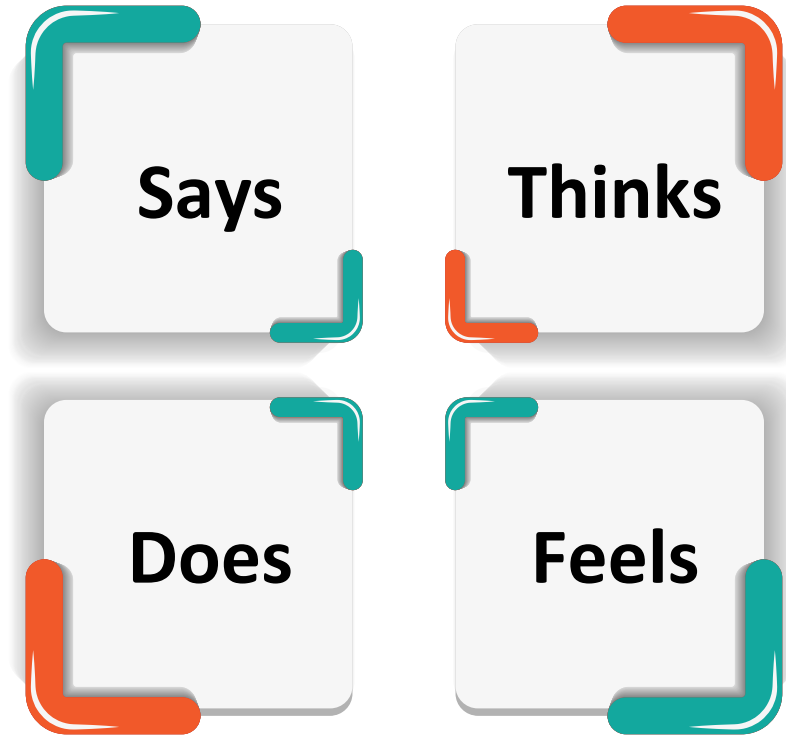


# The “10-minute persona”

Using empathy maps as the basis  
of larger personas

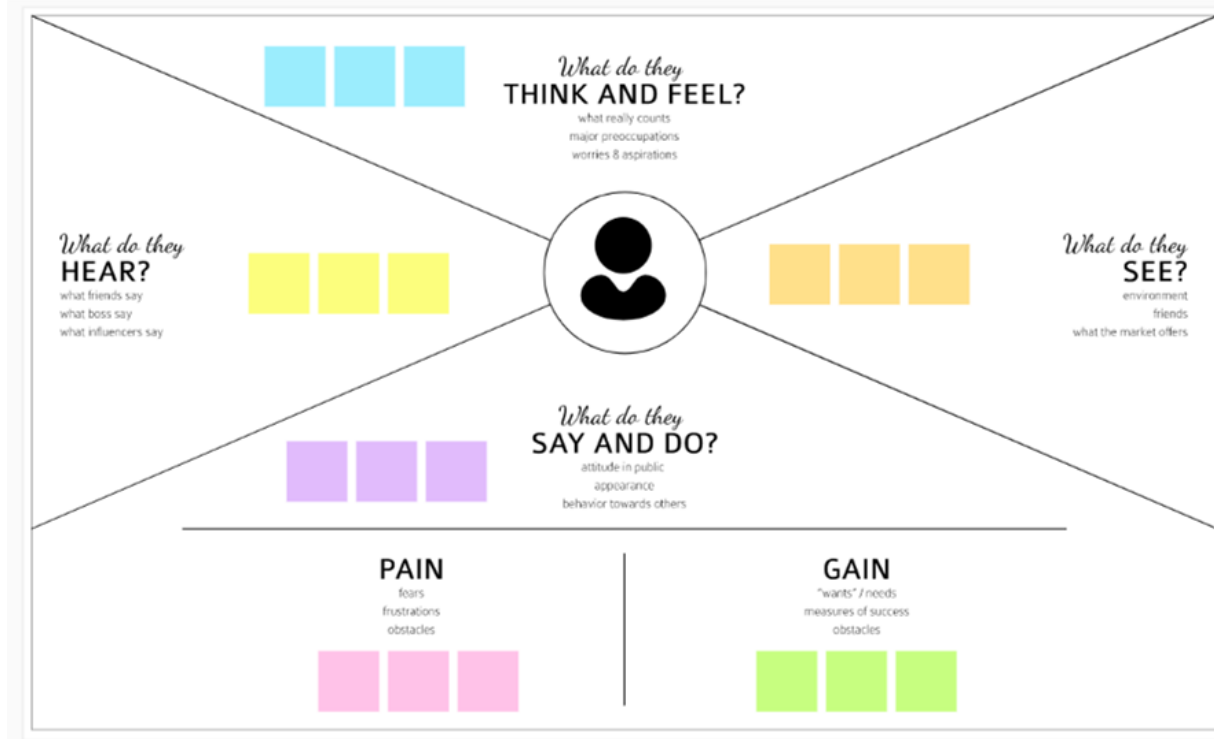
Maps for specific tasks

# Classical Empathy Map





# Empathy Map Canvas



# Thoughts and Feelings

- How does the user feel in the context of the task, or when the task is triggered?
- How do they feel when performing the task?
- What is the cognitive load?
- When and how do cognitions change throughout the process?



# Actions

---

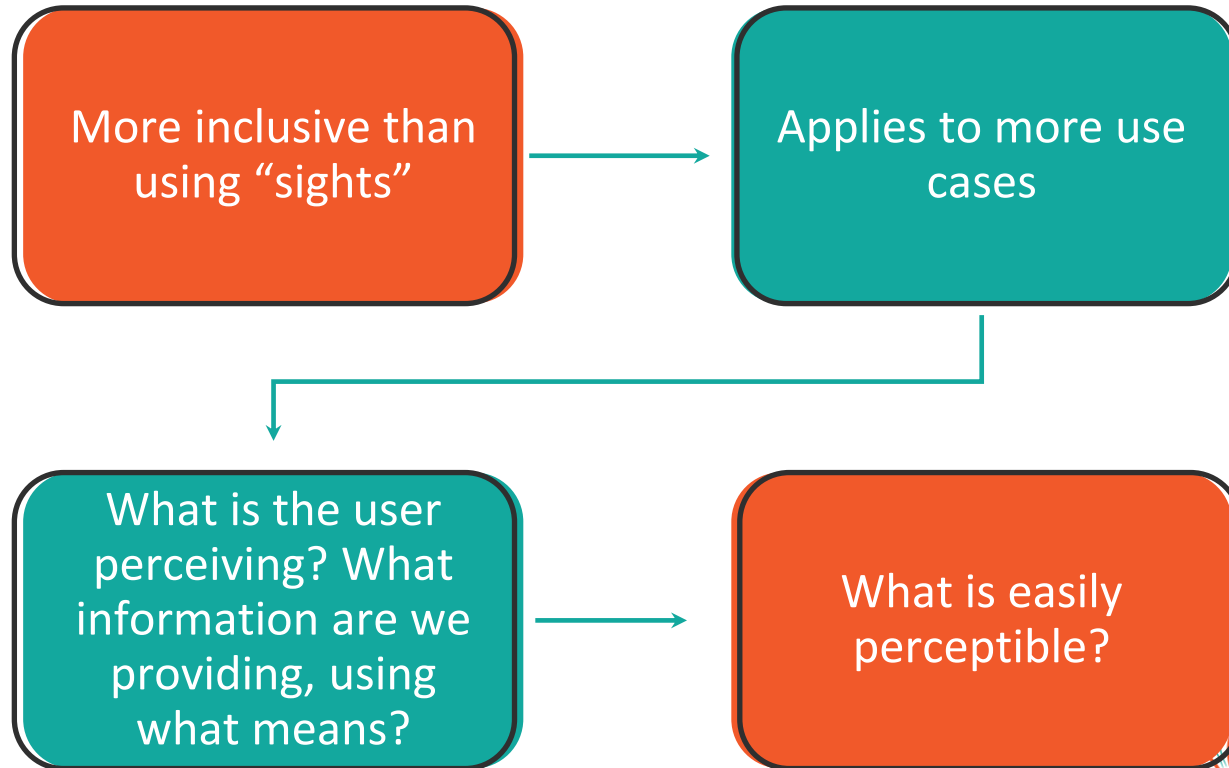


What is the user actually doing?



(Most non-empathy approaches stop here)

# Perceptions



# Influences

---



What impacts the users' decision to engage with the product?



What influences impact them while engaging with it?

# Quotes

What does  
the user say  
about their  
experience?

How does  
that vary by  
persona?

# Methods



Field studies



Focus groups



UX methods  
such as card  
sorting



User  
interviews

# Links

## Empathy Map Canvas

<https://www.mural.co/templates/empathy-map-canvas>

## Getting Started with Empathy

<https://www.interaction-design.org/literature/article/design-thinking-getting-started-with-empathy>

## Empathy Mapping: The First Step in Design Thinking

<https://www.nngroup.com/articles/empathy-mapping/>



Christina J. Inge



# Thank you!

Christina@Thoughtlight.net  
Thoughtlight.net  
@ChristinaInge



Christina J. Inge